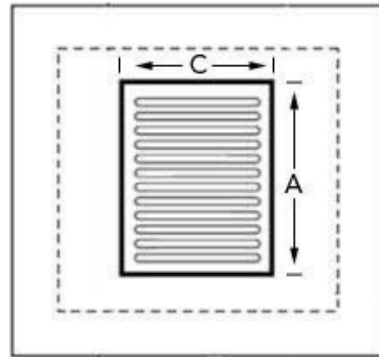
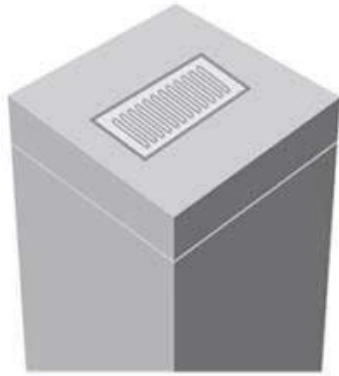
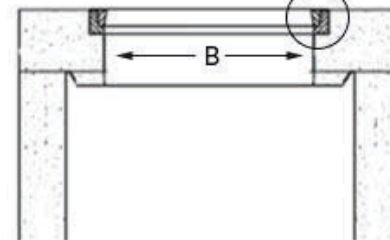
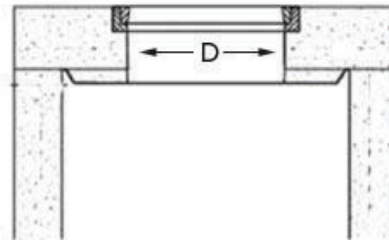


# FLEXSTORM DIMENSIONAL FORM: P2E

## Style: Square/Rectangular Grate in Top Slab



- A: GRATE SIZE (LONG SPAN)
- B: CLEAR OPENING (LONG SPAN)
- C: GRATE SIZE (SHORT SPAN)
- D: CLEAR OPENING (SHORT SPAN)



If angle iron framing is used, take measurements of smallest clear opening if not flush with concrete wall.

Frame P/N (ZINC PLATED)	HD Frame P/N (STAINLESS STEEL)	Sizes
62SSQ	62SHD	<b>Small:</b> 64" max perimeter of clear opening B x D (20" x 12") - (16" x 16")
62MSQ	62MHD	<b>Medium:</b> 96" max perimeter of clear opening B x D (36" x 12") - (24" x 24")
62LSQ	62LHD	<b>Large:</b> 120" max perimeter of clear opening B x D (48" x 12") - (30" x 30")
62XLSQ	62XLHD	<b>XL</b> (typically 2-pc set): 168" max perimeter of clear opening B x D dimensions up to 48" x 48"

Ref	Dimension (+/- .1 in)
A	
B	
C	
D	



Phone: 866-287-8655  
 Fax: 630-355-3477  
[www.inletfilters.com](http://www.inletfilters.com)

[www.ads-pipe.com](http://www.ads-pipe.com)  
 Phone: 800-821-6710

