

- NOTES:**
1. All Materials Are Type 304SS Unless Otherwise Noted
 2. All Horizontal And Vertical Stiffeners Shall Be Spot Welded @ 4\"C.C. (Max) To Perforated Screen
 3. Center Stiffener Required When $S \geq 3'-0''$
 4. Top And Center Base Support Brackets Required When $S \geq 3'-0''$
 5. 3\" Base Support Bracket At The Inflection Point Required For All Units
 6. For Catch Basin Uneven Floor Extension Panel Detail See Sh. 4

LOS ANGELES COUNTY
DEPARTMENT OF PUBLIC WORKS

ACCEPTED
 MAKE CORRECTIONS NOTED
 REVISE CALCULATIONS
 REJECTED

REVIEW IS PERFORMED BY THE DEPARTMENT TO ENSURE THE CONTRACTOR'S GENERAL CONFORMANCE WITH THE DESIGN CONCEPT OF THE PROJECT AND GENERAL COMPLIANCE WITH THE SPECIFICATIONS. THE CONTRACTOR IS SOLELY RESPONSIBLE FOR THE CORRECTNESS OF DIMENSIONS, PROPER CONSTRUCTION AND INSTALLATION METHODS, AND FOR FULFILLING ALL CONTRACTUAL REQUIREMENTS. ACCEPTANCE INDICATED HEREON DOES NOT RELIEVE THE CONTRACTOR OF THESE OBLIGATIONS.

By: Steven Dickson DATE 07-28-16

ELEVATION VIEW
N.T.S.

PLAN VIEW
N.T.S.

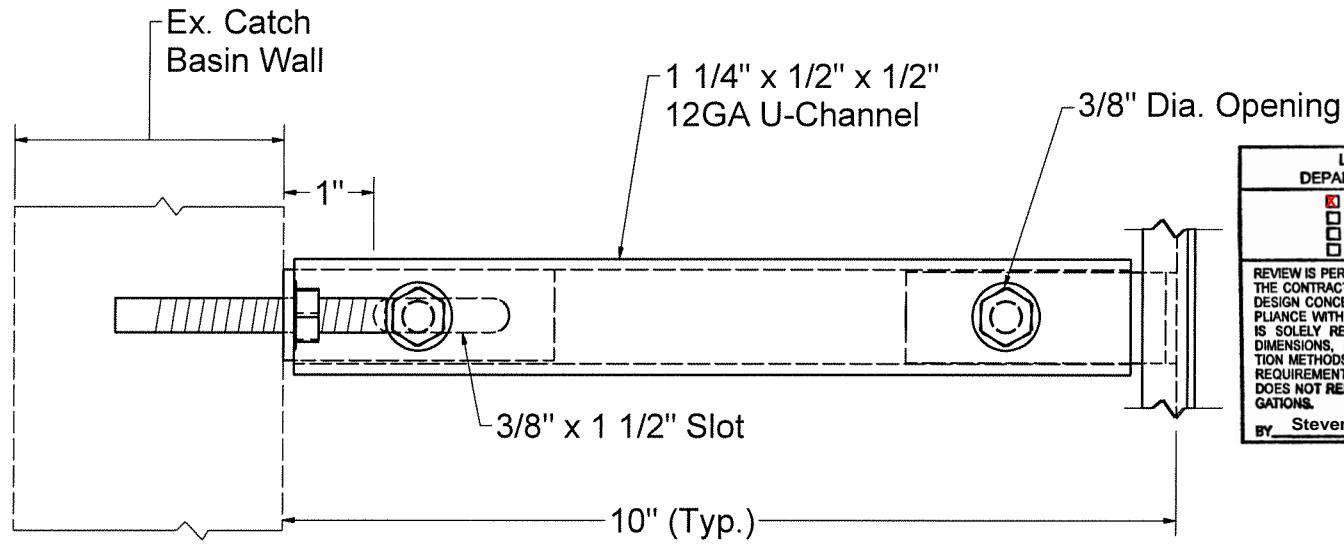
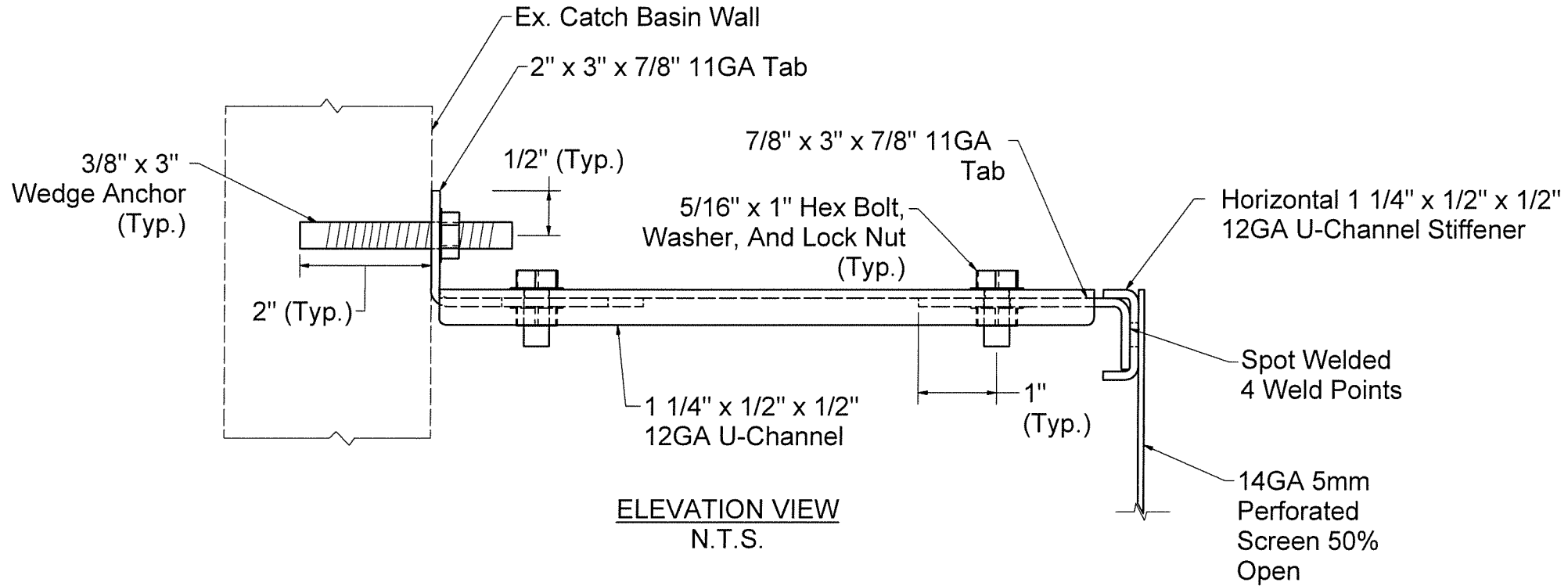
DETAIL A
N.T.S.

*See Appendix A-1 And CPS Sizing Table For Hb, Hs, And L Values

ADS FLEXSTORM CPS L		
TITLE PLAN, ELEVATION, AND DETAIL		
SIZE C	DATE 7/25/2016	REV A
SHEET 1 OF 5		

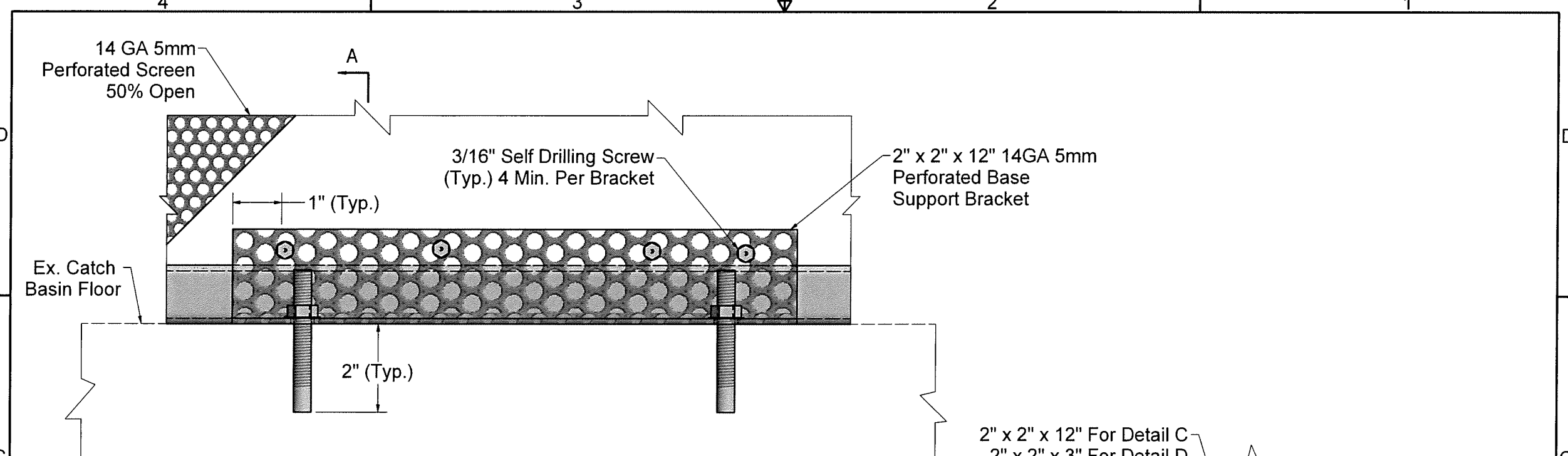
NOTE:

-Top Support Bracket Required When $S \geq 3'-0"$



LOS ANGELES COUNTY DEPARTMENT OF PUBLIC WORKS	
<input checked="" type="checkbox"/>	ACCEPTED
<input type="checkbox"/>	MAKE CORRECTIONS NOTED
<input type="checkbox"/>	REVISE CALCULATIONS
<input type="checkbox"/>	REJECTED
REVIEW IS PERFORMED BY THE DEPARTMENT TO ENSURE THE CONTRACTOR'S GENERAL CONFORMANCE WITH THE DESIGN CONCEPT OF THE PROJECT AND GENERAL COMPLIANCE WITH THE SPECIFICATIONS. THE CONTRACTOR IS SOLELY RESPONSIBLE FOR THE CORRECTNESS OF DIMENSIONS, PROPER CONSTRUCTION AND INSTALLATION METHODS, AND FOR FULFILLING ALL CONTRACTUAL REQUIREMENTS. ACCEPTANCE INDICATED HEREON DOES NOT RELIEVE THE CONTRACTOR OF THESE OBLIGATIONS.	
BY <u>Steven Dickson</u>	DATE <u>07-28-16</u>

ADS FLEXSTORM CPS L		
TITLE TOP SUPPORT BRACKET DETAIL		
SIZE C	DATE 7/25/2016	REV A
SHEET 2 OF 5		



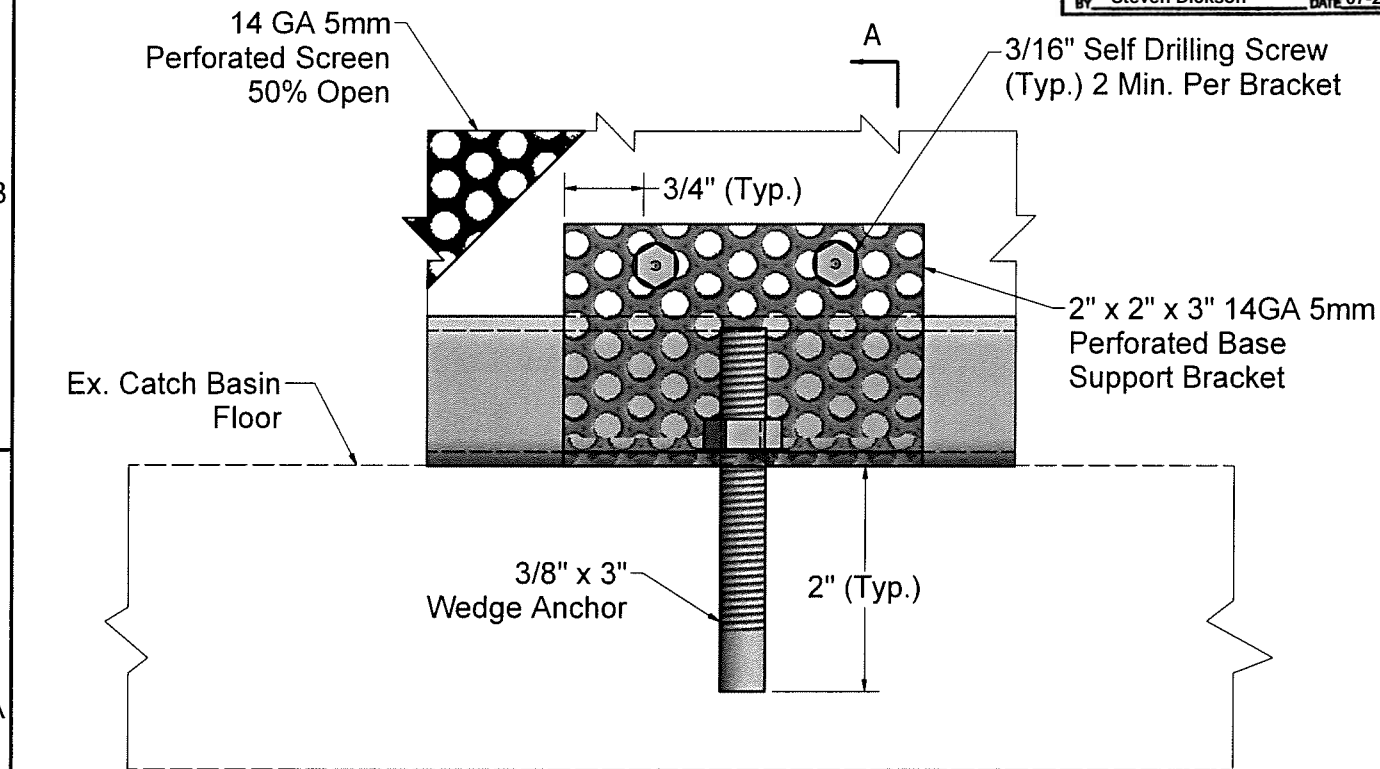
DETAIL C (SH. 1)
N.T.S.

LOS ANGELES COUNTY
DEPARTMENT OF PUBLIC WORKS

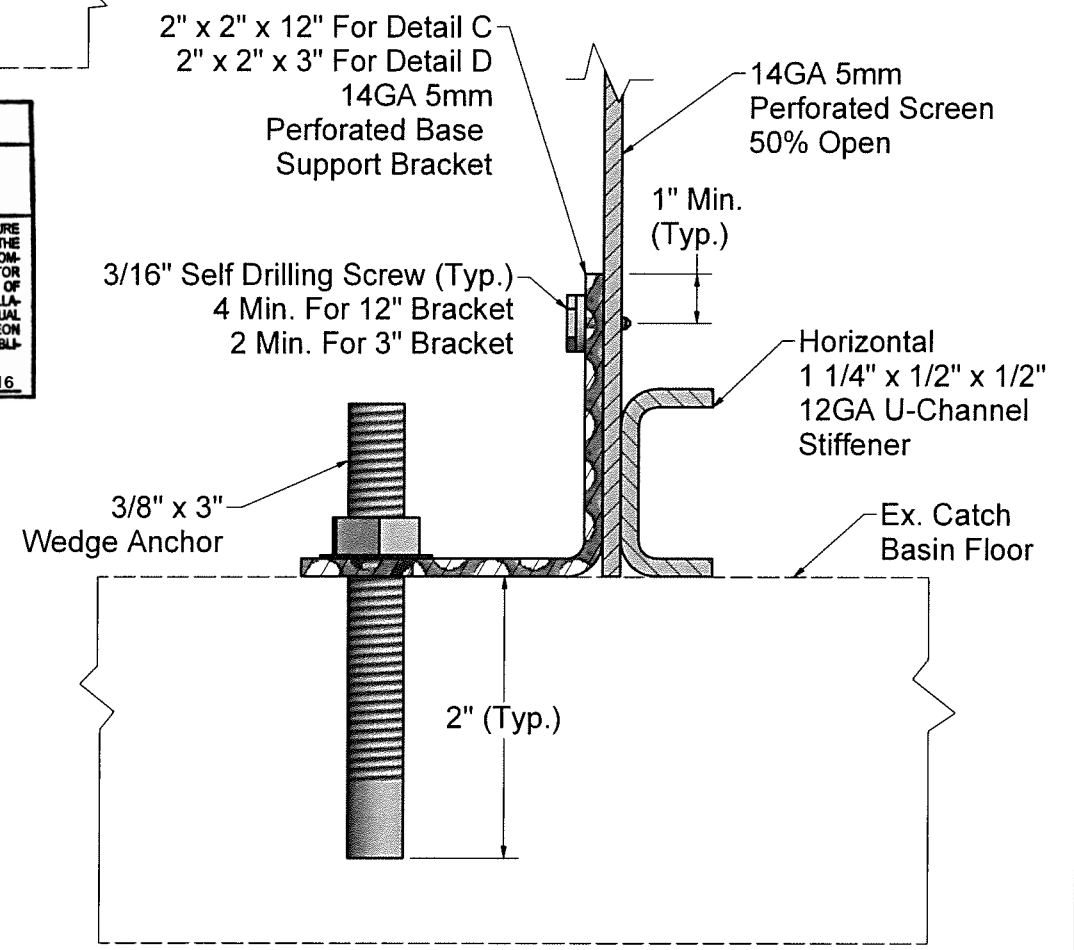
ACCEPTED
 MAKE CORRECTIONS NOTED
 REVISE CALCULATIONS
 REJECTED

REVIEW IS PERFORMED BY THE DEPARTMENT TO ENSURE THE CONTRACTOR'S GENERAL CONFORMANCE WITH THE DESIGN CONCEPT OF THE PROJECT AND GENERAL COMPLIANCE WITH THE SPECIFICATIONS. THE CONTRACTOR IS SOLELY RESPONSIBLE FOR THE CORRECTNESS OF DIMENSIONS, PROPER CONSTRUCTION AND INSTALLATION METHODS, AND FOR FULFILLING ALL CONTRACTUAL REQUIREMENTS. ACCEPTANCE INDICATED HEREON DOES NOT RELIEVE THE CONTRACTOR OF THESE OBLIGATIONS.

BY: Steven Dickson DATE: 07-28-16

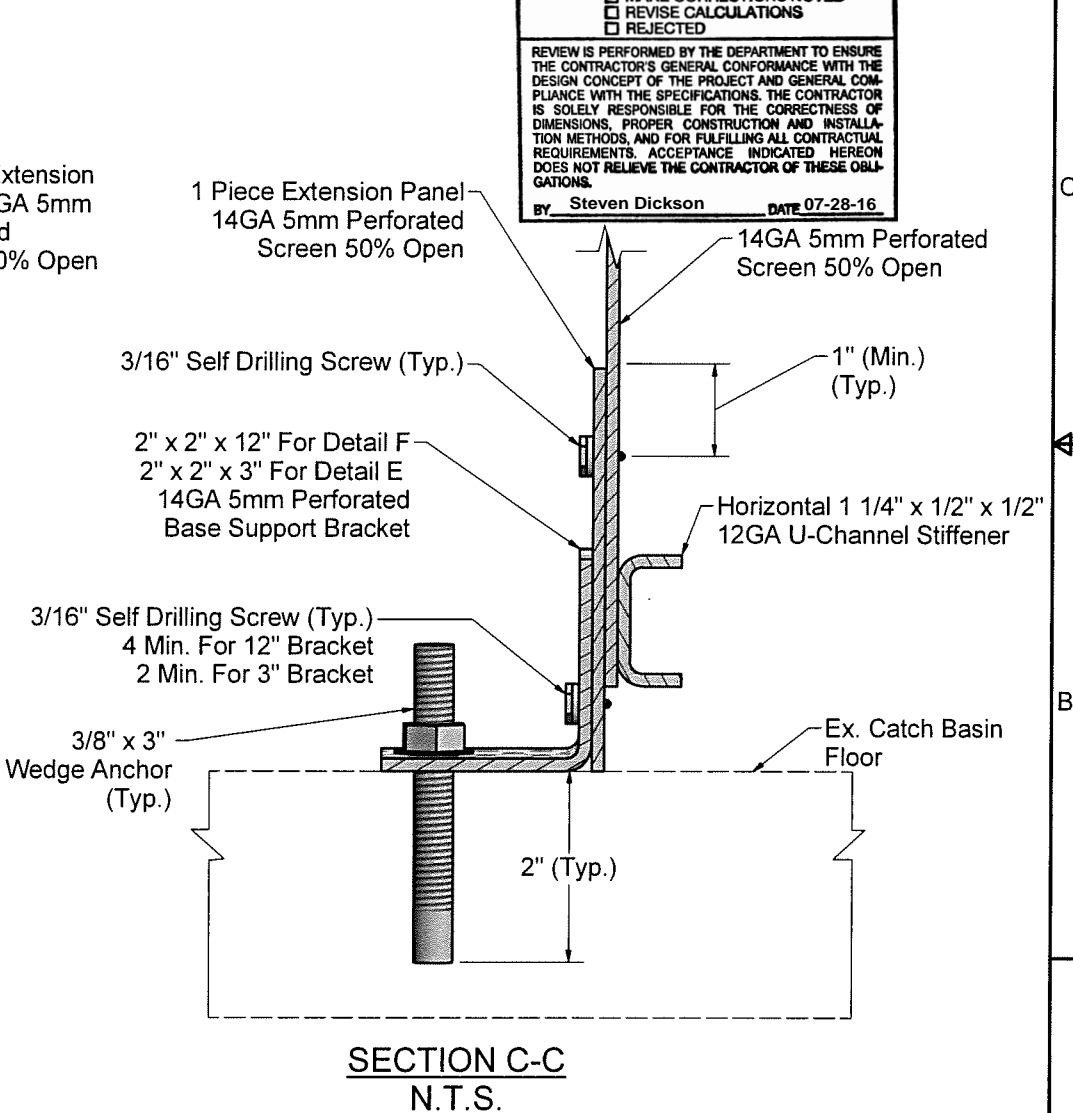
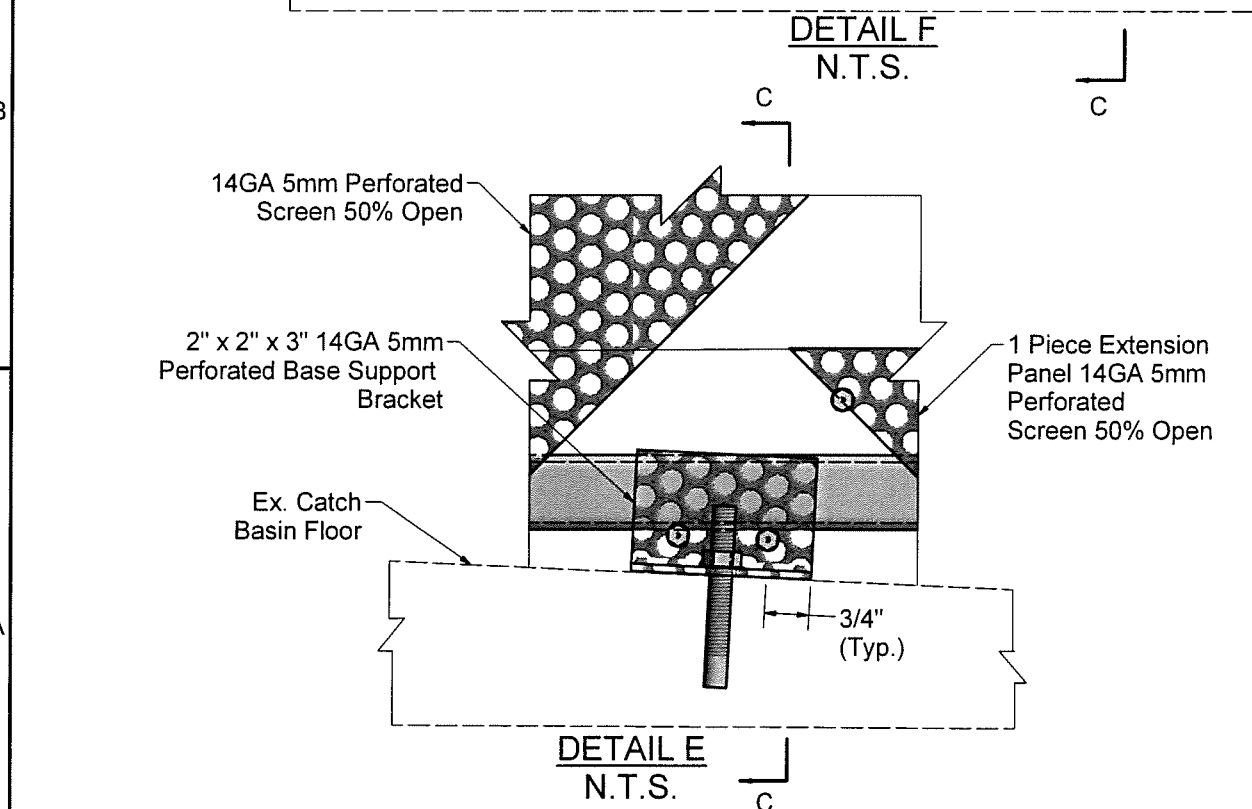
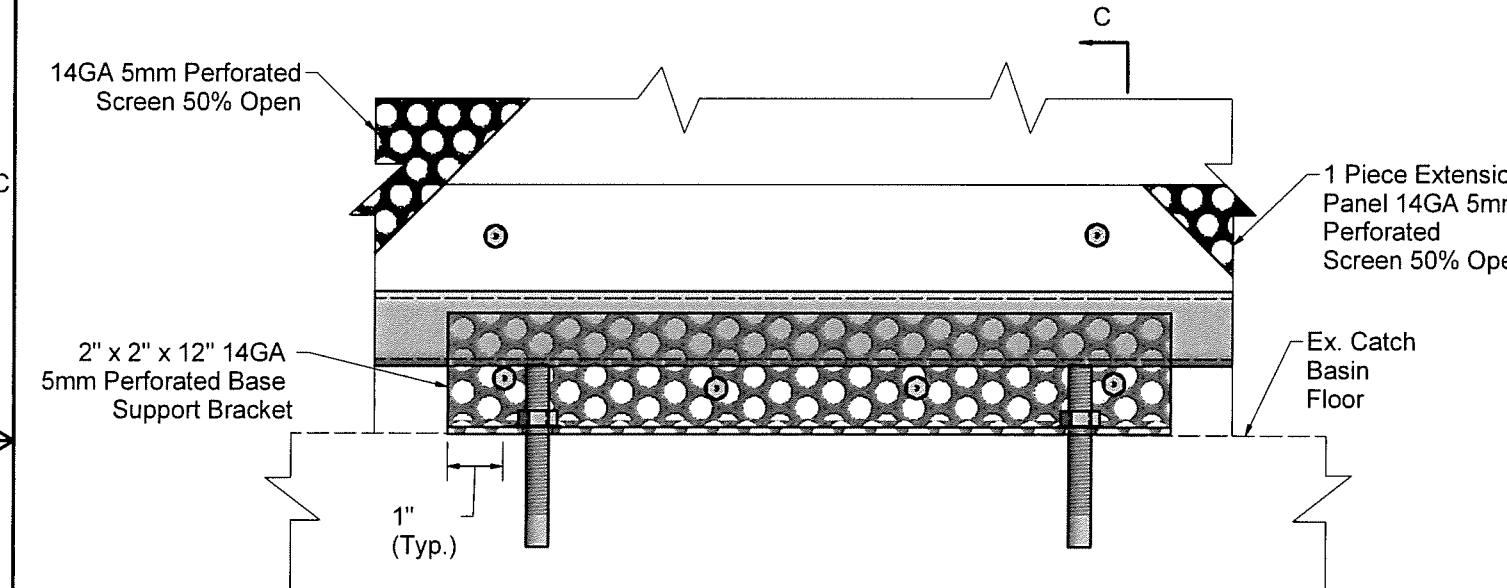
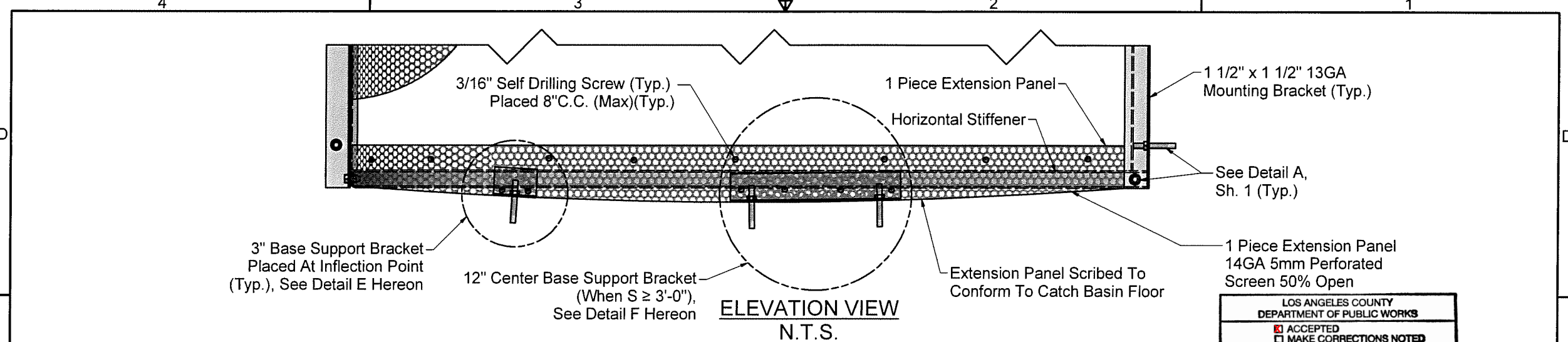


DETAIL D (SH. 1)
N.T.S.



SECTION A-A
N.T.S.

ADS FLEXSTORM CPS L		
TITLE BASE SUPPORT BRACKET DETAILS		
SIZE C	DATE 7/25/2016	REV A
SHEET 3 OF 5		



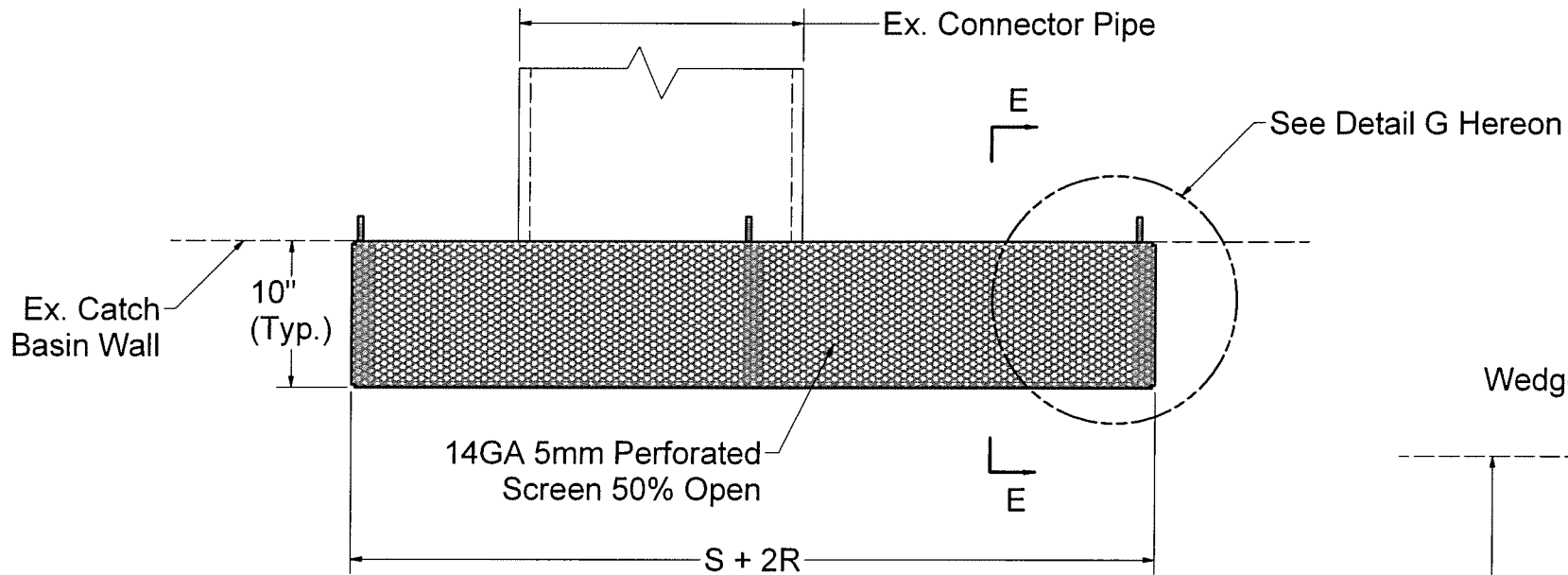
LOS ANGELES COUNTY
DEPARTMENT OF PUBLIC WORKS

ACCEPTED
 MAKE CORRECTIONS NOTED
 REVISE CALCULATIONS
 REJECTED

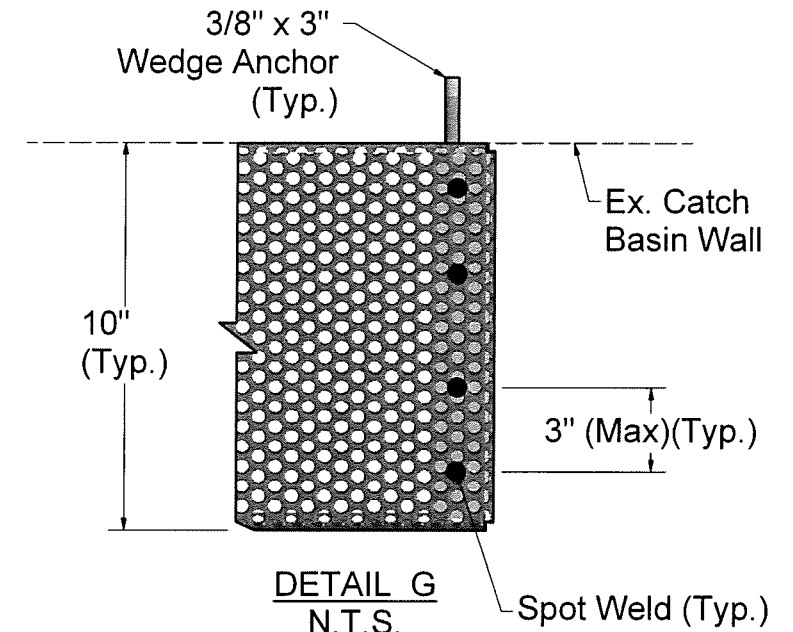
REVIEW IS PERFORMED BY THE DEPARTMENT TO ENSURE THE CONTRACTOR'S GENERAL CONFORMANCE WITH THE DESIGN CONCEPT OF THE PROJECT AND GENERAL COMPLIANCE WITH THE SPECIFICATIONS. THE CONTRACTOR IS SOLELY RESPONSIBLE FOR THE CORRECTNESS OF DIMENSIONS, PROPER CONSTRUCTION AND INSTALLATION METHODS, AND FOR FULFILLING ALL CONTRACTUAL REQUIREMENTS. ACCEPTANCE INDICATED HEREON DOES NOT RELIEVE THE CONTRACTOR OF THESE OBLIGATIONS.

BY: Steven Dickson DATE 07-28-16

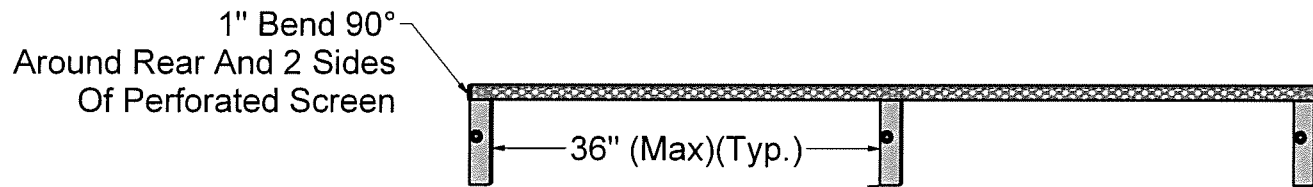
ADS FLEXSTORM CPS L		
TITLE		
EXTENSION PANEL DETAILS		
SIZE	DATE	REV
C	7/25/2016	A
SHEET 4 OF 5		



PLAN VIEW
N.T.S.

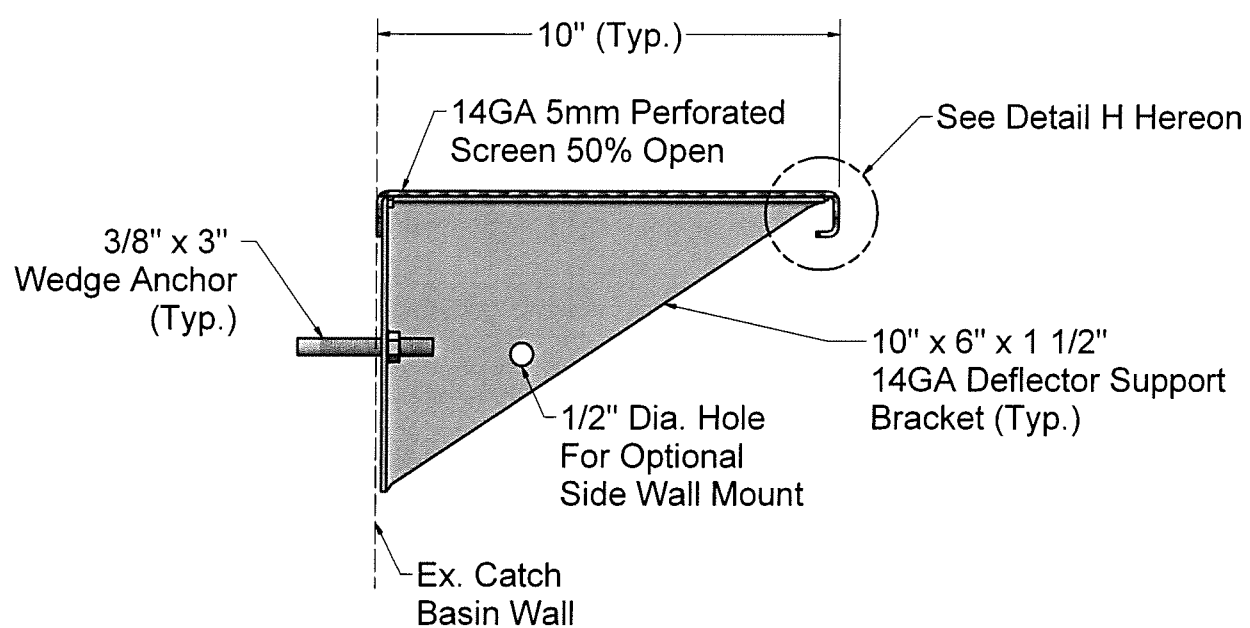


DETAIL G
N.T.S.

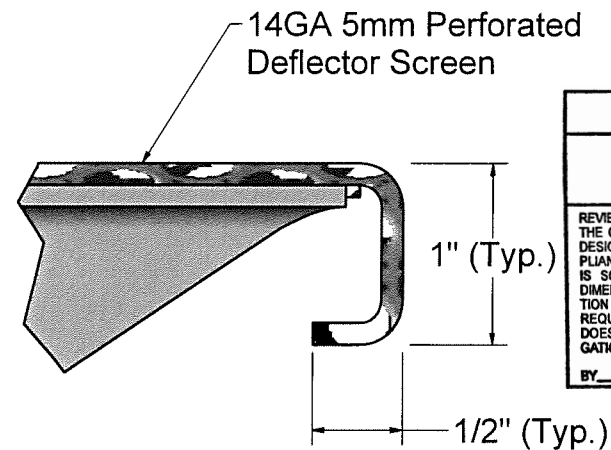


ELEVATION VIEW
N.T.S.

10" x 6" x 1 1/2" 14GA
Deflector Support Bracket (Typ.)



SECTION E-E
N.T.S.



DETAIL H
N.T.S.

LOS ANGELES COUNTY DEPARTMENT OF PUBLIC WORKS	
<input checked="" type="checkbox"/>	ACCEPTED
<input type="checkbox"/>	MAKE CORRECTIONS NOTED
<input type="checkbox"/>	REVISE CALCULATIONS
<input type="checkbox"/>	REJECTED
REVIEW IS PERFORMED BY THE DEPARTMENT TO ENSURE THE CONTRACTOR'S GENERAL CONFORMANCE WITH THE DESIGN CONCEPT OF THE PROJECT AND GENERAL COMPLIANCE WITH THE SPECIFICATIONS. THE CONTRACTOR IS SOLELY RESPONSIBLE FOR THE CORRECTNESS OF DIMENSIONS, PROPER CONSTRUCTION AND INSTALLATION METHODS, AND FOR FULFILLING ALL CONTRACTUAL REQUIREMENTS. ACCEPTANCE INDICATED HEREON DOES NOT RELIEVE THE CONTRACTOR OF THESE OBLIGATIONS.	
BY: Steven Dickson	DATE: 07-28-16

ADS FLEXSTORM CPS L		
DEFLECTOR DETAIL		
SIZE C	DATE 7/25/2016	REV A
SHEET 5 OF 5		