

Easy to Install, Easy to Maintain, Easy to See the FLEXSTORM Difference:

INSTALL WITH EASE:

REMOVE GRATE, CLEAN LEDGE,
AND LOWER FILTER DOWN.
INSTALLS IN SECONDS!

AVOID FLOODING:

ULTIMATE BYPASS AREA PREVENTS WATER
FROM BACKING UP INTO STREET DURING HIGH
VOLUME RAIN EVENTS.

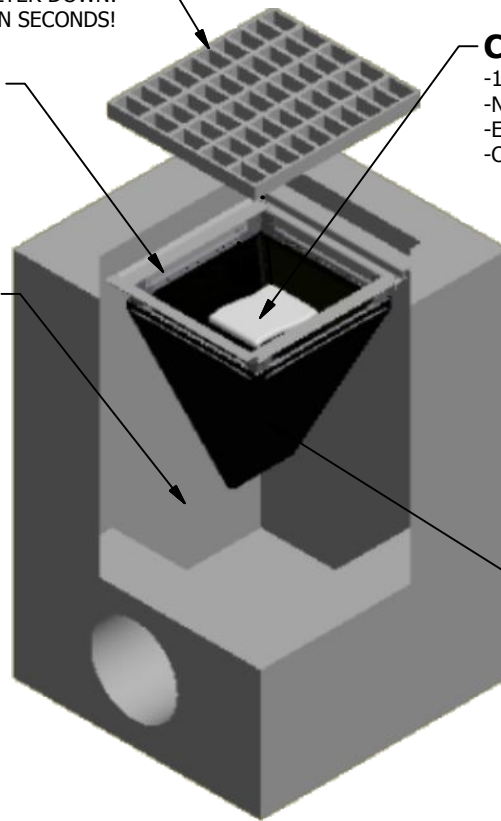
CLEARTEC RUBBERIZER (OPTIONAL):

- 106 oz OIL CAPACITY
- NON-LEACHING
- EASY DISPOSAL
- CHANGES COLOR WHEN REPLACEMENT IS NEEDED.



FIT ANY DRAINAGE STRUCTURE:

FRAMING IS MANUFACTURED TO
ACCOMMODATE ANY SHAPE OR SIZE.



TARGET SPECIFIC POLLUTANTS:

- REPLACEABLE FILTERS, ABSORBING MEDIA,
AND STAINLESS STEEL BASKETS TREAT:
- HYDROCARBONS (97% TPH)
 - NUTRIENTS (TP, TN)
 - METALS
 - FINES PARTICULATES (110 micron, 99% TSS)
 - TRASH AND DEBRIS

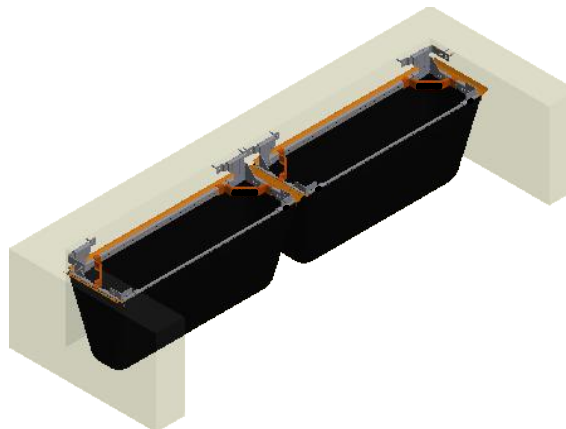


MAINTENANCE TOOL

ALSO AVAILABLE:



ROUND INLETS



OPEN THROAT/CURB INLETS



CONNECTOR PIPE SCREENS

Product selection for FLEXSTORM PURE Filters (Permanent Inlet Protection)

Standard Description	Suntree GISB Equivalent	Triton Equivalent	Kristar Equivalent	Grate Size	Clear Opening Size	Bag Cap. (ft ³)*	Flow Ratings (CFS)			Filter Bag Options and Part Numbers	
							FX/FX+*	PC/PC+*	Bypass	FX+ 82% TSS removal, 106 oz oil capacity++	PC+ 99% TSS Removal+++, 150-300 oz oil capacity*
24" Open Throat Inlet	CIB-2	TRC2	FGP-24CI	N/A	24	1.9	1.5	1.4	N/A	62HDWM24FXP	62HDWM24PCP
36" Open Throat Inlet	CIB-3	TRC3	FGP-36CI	N/A	36	2.5	1.9	1.4	N/A	62HDWM36FXP	62HDWM36PCP
48" Open Throat Inlet	CIB-4	TRC4	FGP-48CI	N/A	48	3.3	2.5	1.7	N/A	62HDWM48FXP	62HDWM48PCP
84" Open Throat Inlet	CIB-7	TRC4	FGP-84CI	N/A	84	3.3	2.5	1.7	N/A	62HDWM84FXP	62HDWM84PCP



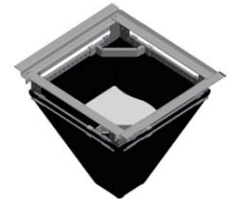
62HDWM84FXP- 84" Open Throat Inlets

Standard Description	Suntree GISB Equivalent	Triton Equivalent	Kristar Equivalent	Grate Size	Clear Opening Size	Bag Cap. (ft ³)*	Flow Ratings (CFS)			Filter Bag Options and Part Numbers	
							FX/FX+*	PC/PC+*	Bypass	FX+ 82% TSS removal, 106 oz oil capacity++	PC+ 99% TSS Removal+++, 150-300 oz oil capacity*
21" Round Opening	N/A	TR18RD	FGP-RF21F	23	21.0	1.3	1.1	0.9	4.5	62HDR21FXP	62HDR21PCP
24" Round Opening	N/A	TR24RD	FHP-RF24F	26	24.0	1.5	1.3	1.1	4.9	62HDR24FXP	62HDR24PCP



62HDR23FXP

Standard Description	Suntree GISB Equivalent	Triton Equivalent	Kristar Equivalent	Grate Size	Clear Opening Size	Bag Cap. (ft ³)*	Flow Ratings (CFS)			Filter Bag Options and Part Numbers	
							FX/FX+*	PC/PC+*	Bypass	FX+ 82 TSS removal, 106 oz oil capacity++	PC+ 99% TSS Removal+++, 150-300 oz oil capacity*
12" x 12" precast	GISB-12-12-12	TR1212	FGP-12F	15 x 15	12 x 12	0.9	1.0	0.7	2.1	62HD12FXP	62HD12PCP
16" x 16" precast	GISB-16-16-16	TR1616	FGP-16F	19 x 16	16 x 16	1.3	1.2	0.7	2.4	62HD16FXP	62HD16PCP
18" x 18" precast	GISB-18-18-18	TR1818	FGP-18F	21 x 18	18 x 18	1.5	1.5	1.0	3.7	62HD18FXP	62HD18PCP
24" x 24" precast	GISB-24-24-24	TR-24SR	FGP-24F	27 x 24	24 x 24	2.6	1.9	1.4	4.2	62HD24FXP	62HD24PCP
36" x 18" precast	GISB-36-18-24		FGP-3618F	40 x 18	36 x 18	3.8	2.2	1.5	5.6	62HD3618FXP	62HD3618PCP
36" x 24" precast	GISB-25-38-24	TR2436	FGP-2436F	40 x 24	36 x 24	3.9	2.5	1.7	6.5	62HD3624FXP	62HD3624PCP
48" x 24" precast	GISB-48-24-18	TR2448	FGP-48F	52 x 24	24 x 48	6.5	2.8	2.1	7.1	62HD4824FXP	62HD4824PCP
36" X 36" precast (2 pc set)	GISB-36-36-24	TR3636	FGP-36F	40 x 36	36 x 36	7.6	4.4	3.8	8.3	62HD36FXP	62HD36PCP
48" X 48" precast (2 pc set)	GISB-48-48-18	FGP-48F	48 x 48	52 x 52	48 x 48	13.0	5.6	4.2	10.0	62HD48FXP	62HD48PCP



62HD24FXP



62HD3624FXP

Standard Description	Suntree GISB Equivalent	Triton Equivalent	Kristar Equivalent	Grate Size	Clear Opening Size	Bag Cap. (ft ³)*	Flow Ratings (CFS)			Filter Bag Options and Part Numbers	
							FX/FX+*	PC/PC+*	Bypass	FX+ 82% TSS Removal, 106 oz oil capacity++	PC+ 99% TSS Removal+++, 150-300 oz oil capacity*
36" x 18" Combination Inlet	GISB-36-18-24		FGP-1836FGO	40 x 18	36 x 18	3.5	2.2	1.5	6.8	62HDFCB3618FXP	62HDFCB3618PCP
36" X 24" Combination Inlet	GISB-25-38-24	TR2436	FGP-2234FGO	40 x 24	36 x 32	4.2	2.8	1.9	7.2	62HDFCB3624FXP	62HDFCB3624PCP
San Francisco Horseshoe	N/A		N/A	Horseshoe	Horseshoe	2.0	2.0	1.6	4.2	62HHRSHFXP	62HHRSHPCP



62UMT

Flexstorm Accessories	
62CTSB	Included with every FX+ and PC+ bag, this pouch skims hydrocarbons from the storm water.
62UMT	Flexstorm's 2 man Flexstorm Matintenance and Grate removal tool. Remove grates and service full Flexstorm filters without the use of a machine.

+Filtration Efficiency Per TRI Environmental ASTM D7351 "Large-Scale Sediment Retention Device Testing" using street sweep particle size distribution
 ++Per Clearartec Technical Manual; Adsorbption of light cude oil with 20 oz Clearartec Rubberizer Media.
 ++++99% TSS Removal Per TRI Environmental Large-Scale testing at 90 GPM using US Silica OK-110 sand at 1750 mg/L measuring TSS per SM25400.
 *Ratings shown for standard depth bags (22"): Short bags (12" deep) are available with a -S Suffix. Ratings reduced by 50%.