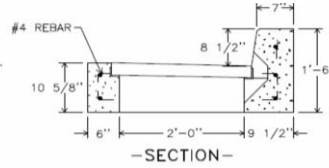
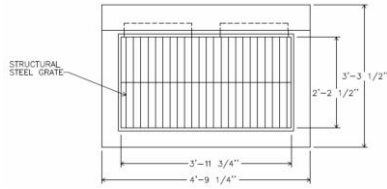
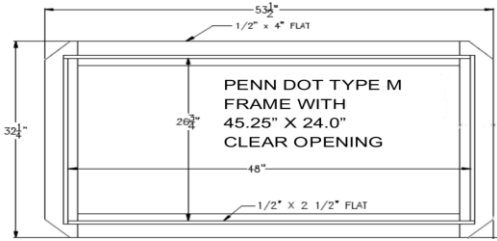


Product selection for FLEXSTORM CATCH-IT Filters (Temporary Inlet Protection)						
Descrip	Inlet Type	Grate Size	Opening Size	Bag Cap (ft ²)	FX Bag Flow Ratings (CFS)	ADS P/N
2' x 4' Penndot Type M & C	Square/Rect (SQ)	26.5 x 48	24 x 44.5	6.3	2.8	62PENNMFX
2' x 6' Frame and Grate	Concrete Box (HD4)	26.5 x 75	24 x 72	10.0	4.8	62PENN2x6FX
3 x 3 Frame and Grate	Square/Rect (SQ)	37.5 x 37.5	36 x 36	4.2	4.4	62XLSQFX
48" Open Throat Curb Inlet	Wall Mount (WM)	N/A	48	3.3	2.5	62WM48FX



62PENNMHDPCP Stainless Steel Framing and PC+ Bag

Product selection for FLEXSTORM PURE Filters (Permanent Inlet Protection)													
Descrip	Inlet Type	Grate Size	Opening Size	Bag Cap (ft ²)	Flow Ratings (CFS)			ADS P/N				Replacement Bags	
					FX/FX+	PC/PC+	Bypass	FX	FX+FXO	PC	PC+		
2' x 4' Penndot Type M & C	Square/Rect (SQ)	26.5 x 48	24 x 44.5	6.3	3.1	2.2	9.5	62PENNMHDFX	62PENNMHDFXP	62PENNMHDPC	62PENNMHDPCP	62PENNMRB	62PENNMPC
2' x 2' Frame and Grate	Square/Rect (SQ)	24 x 24	22 x 22	3.3	1.8	1.6	4.8	62MHD22FX	62MHD22FXP	62MHD22PC	62MHD22PCP	62PENNMRB	62PENNMPC
2' x 6' Frame and Grate	Concrete Box (HD4)	26.5 x 75	24 x 72	10.0	4.8	4.1	13.0	62PENNH2x6FX	62PENNH2x6FXP	62PENNH2x6PC	62PENNH2x6PCP		
3 x 3 Frame and Grate	Square/Rect (SQ)	37.5 x 37.5	36 x 36	7.2	4.4	3.2	9.6	62HDXLFX	62HDXLFXP	62HDXLPC	62HDXLPCP		
48" Open Throat Curb Inlet	Wall Mount (WM)	N/A	48	3.3	2.5	4.2	N/A*	62HDWM48FX	62HDWM48FXP	62HDWM48PC	62HDWM48PCP	62LRBFX	62LRBPC

*Once bypass flow rates are reached water bypasses over top back of filter, this results in unlimited bypass capacity in Wall Mounted Units

Product selection for FLEXSTORM NYLOPLAST Filters (Permanent Inlet Protection)										
Descrip	Inlet Type	Grate Size	Opening Size	Bag Cap (ft ²)	ADS P/N				Replacement Bags	
					FX	FX+	PC	PC+		
8" Diameter Drop In or Inline Grate	Nyloplast (NY)	8"	8"	0.4	6208NYFX	6208NYFXP	6208NYPC	6208NYPCP	62PENNMRB	62PENNMPC
10" Diameter Drop In or Inline Grate	Nyloplast (NY)	10"	10"	0.6	6210NYFX	6210NYFXP	6210NYPC	6210NYPCP	6210RBFX	6210RBPC
12" Nyloplast Casting	Nyloplast (NY)	12"	12"	0.9	6212NYFX	6212NYFXP	6212NYPC	6212NYPCP	6212RBFX	6212RBPC
15" Nyloplast Casting	Nyloplast (NY)	15"	15"	1.2	6215NYFX	6215NYFXP	6215NYPC	6215NYPCP	6215RBFX	6215RBPC
18" Nyloplast Casting	Nyloplast (NY)	Varies	18"	1.5	6218NYFX	6218NYFXP	6218NYPC	6218NYPCP	6218RBFX	6218RBPC
24" Nyloplast Casting	Nyloplast (NY)	Varies	24"	2.1	6224NYFX	6224NYFXP	6224NYPC	6224NYPCP	6224RBFX	6224RBPC
30" Nyloplast Casting	Nyloplast (NY)	Varies	30"	3.0	6230NYFX	6230NYFXP	6230NYPC	6230NYPCP	6230RBFX	6230RBPC

Nyloplast Catch Basin with Flexstorm inlet filter

Flexstorm Accessories		
62HDWM48DEFL	48" Curb Inlet Perforated Stainless Steel Deflector	
62CTSB	Included with every FX+ and PC+ bag, this pouch skims hydrocarbons from the storm water.	
62UMT	Flexstorm's Patented 2 man Flexstorm Maintenance and Grate removal tool. Remove grates and service full Flexstorm filters without the use of a machine.	

WWW.INLETFILTERS.COM

*To order please contact your local ADS rep or ADS Customer service (800-733-9554) and provide ADS Part number and Casting #, item code, or the grate and clear opening dimensions in reference field.

**You cannot order a Flexstorm Inlet filter without a Casting #, item code, or grate and clear opening measurements

***For submittal drawings, dimensional forms, videos, Operation & Maintenance procedures, and promotional materials visit www.inletfilters.com

****To locate your ADS Sales rep [Click here](#)